

The Ashtons logo is displayed in white text on a dark blue rectangular background in the top right corner. The word "Ashtons" features a green swoosh under the letter 'A'.

203 Ryedale House Piccadilly YO1 9NX

£2,000 Per Calendar Month

2



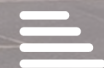
2



1

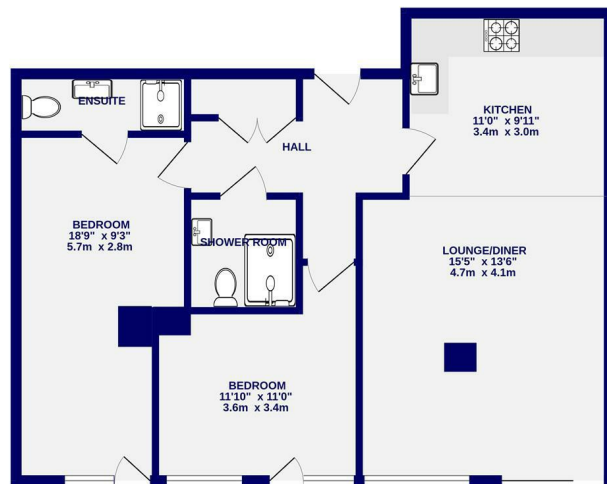


C



In the heart of York City Centre, Ryedale House offers premium living within an exclusive development warded by an onsite concierge and bordered by the River Foss and some of York's most iconic sites. This second floor apartment is finished to a high standard and offered on a furnished basis. Arrive into the apartment's entrance hallway, leading to an open plan living kitchen space with floor to ceiling windows. The contemporary kitchen is well considered, equipped with integrated fridge freezer, oven, hob and dishwasher with washing machine stowed in a utility cupboard. There are two double bedrooms, one with an ensuite shower room. There is the added benefit of underfloor heating.

Flexible Start Date - Available for a June, July or early August start date / 12 Month Tenancy / Deposit £2100 / Council Tax Band TBC - expected E / EPC Rating B / No on site parking, nearest permitted parking available is at Q Parks Shambles where season passes are available



TOTAL FLOOR AREA: 744 sq.ft. (69.1 sq.m.) approx.
Whilst every attempt has been made to ensure the accuracy of the floorplan, measurements of rooms and any other areas are approximate. It should be noted that the floorplan is for illustrative purposes only and should not be used as such for any prospective purchase. The network, systems and appliances shown have not been tested and do not guarantee as to their operability.
Made with Metago 02/25



Ashtons Lettings

01904 731404

lettings@ashtonsnet.com

